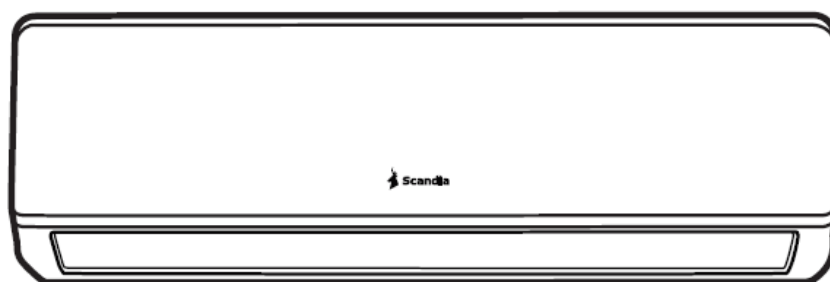




ADINA RANGE

Wi-Fi Operation Manual



Contents

Introduction to the Smart Phone Environment and Wi-Fi Module	p 2
Downloading, Installing and Activating the App	p 3
Adding your Air Conditioner to the App	p11
Using the App to control the Air Conditioner	p12
Air Conditioner Control – More Functions	p22
APP Settings	p26
Troubleshooting Guide	p29
Terms and Conditions	p30

Introduction to the Smart Phone Environment and Wi-Fi Module

Minimum specifications of Smartphone:

Android 5.0 version or higher
IOS 9.0 version or higher

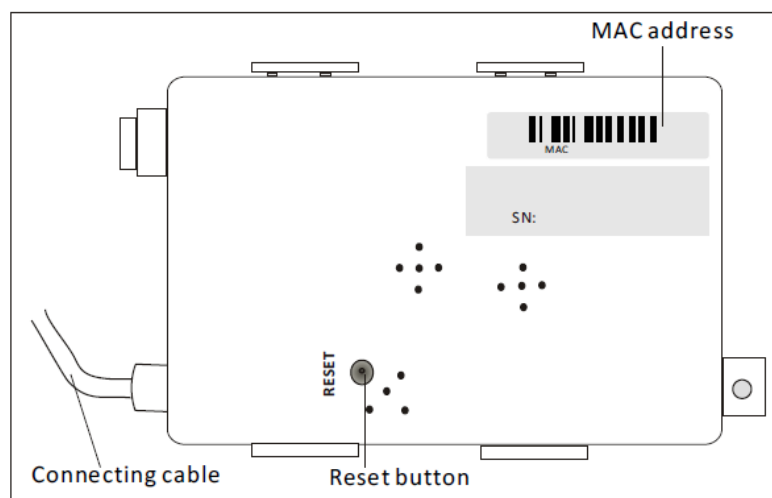
Wireless Network Requirements of Wi-Fi module

	IEEE 802.11b	IEEE 802.11g	IEEE 802.11n
Operating frequency	2400 - 2483.5MHz ISM band	2400 -2483.5MHz ISM band	2400 -2483.5MHz ISM band
Modulation	DQPSK, DBPSK CCK, DSSS	QPSK, BPSK,16QAM 64QAM with OFDM	BPSK, QPSK,16QAM 64QAM with OFDM
Channel numbers	13 channels for worldwide	13 channels for worldwide	
Data rate	At most 11Mbps	At most 54Mbps	At most 150Mbps
Sensitivity	-76dBm for 11Mbps	-65dBm for 54Mbps	-64dBm at MCS7 (2.4GHz band/HT20) -61dBm at MCS7 (2.4GHz band/HT40)
Output Power	16 +/- 2dBm for 11Mbps	14 +/- 2dBm for 54Mbps	12+/- 2dBm at MCS7 (2.4GHz band/HT20) 12+/- 2dBm at MCS7 (2.4GHz band/HT40)
Security	Standard: WEP/WEPA/WPA2 Encryption algorithm: WEP64/WEP128/TKIP/AES		

Where is the Wi-Fi module and the MAC address

The MAC address is the ID of the Wi-Fi module and is located on a label attached to the Wi-Fi module. Each Wi-Fi module has a different MAC address so please do not remove the label, it's very important for service

The Wi-Fi module is located in the indoor unit. To access the Wi-Fi module, open the front panel on the indoor unit, the Wi-Fi module is fitted near to the electric box cover or on the panel.



Downloading, Installing and Activating the App

1. Installing the APP for Android Smartphone

Step1. Tap the "Play Store" icon on the Smartphone.

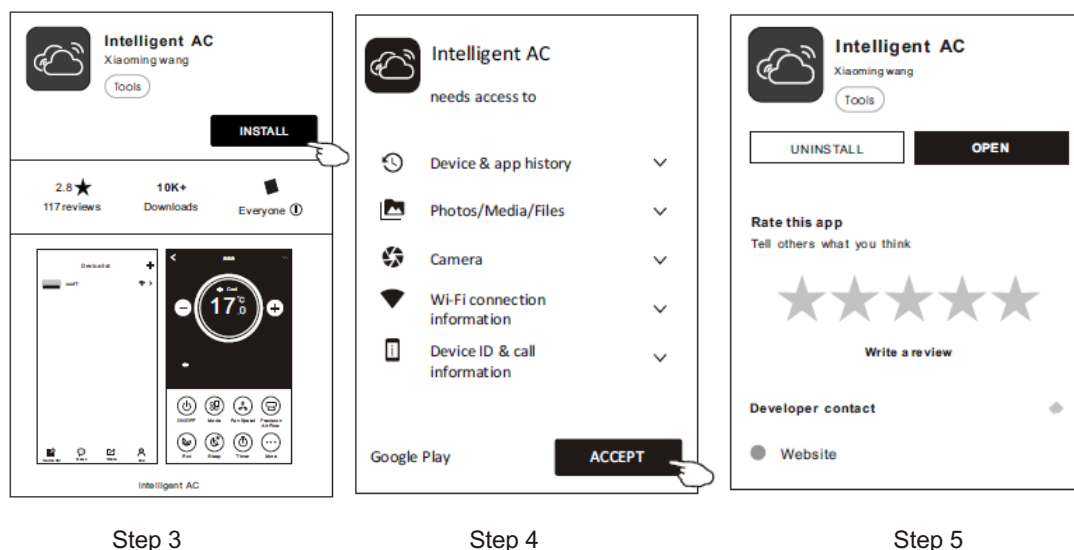


Step2. Type "Intelligent AC" into the search window and search for the app.

Step3. Tap the "INSTALL" button.

Step4. Tap the "ACCEPT" button to install the APP.

Step5. When the app has finished installing, an "OPEN" button will be displayed on the screen. If you are ready to use the APP, tap "OPEN" to start it.



2. Installing the APP for iPhone (IOS system)

Step1. Tap the "APP Store" icon on the iPhone.



Step2. Type "Intelligent AC" in the search window and search for the app.

Step3. Tap the  button to download and install the APP.

Step4. When the app has finished installing, an "OPEN" button will be displayed on the screen. If you are ready to use it, tap "OPEN" to start using the App

3. Alternative way to Download and Install the APP

Step1. Scan the following QR code



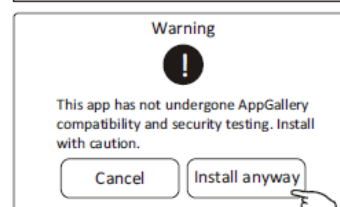
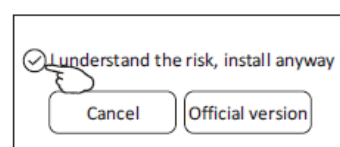
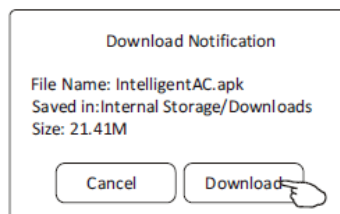
Step2. Tap "Download" on the screen (for iPhone, please enter the App Store and follow item2 "Installing the APP for iPhone" to finish the installation).

Step3. After downloading the APP, tap "Install" on the screen or find the "IntelligentAC.apk" in the download list and open it.

Step4. Select "I understand the risk, install anyway" on the installation screen

Step5. Tap "Install anyway" to install APP.

Step6. When the app is finished installing, an "OPEN" button is displayed on the screen. If you are ready to use it, tap "OPEN" to start it.



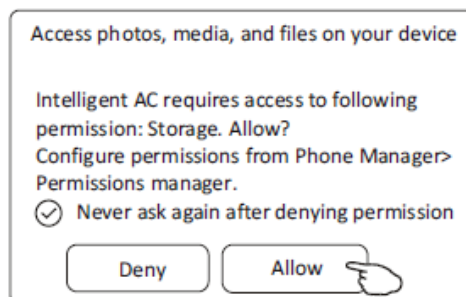
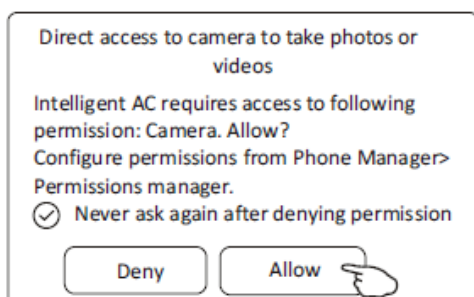
Activate APP - App settings, Activation code and Privacy agreement

1. Launch the APP by tapping the "Intelligent AC" icon on your smart phone.



Intelligent AC

2. Tap "Allow" to give the APP permission to access the camera and storage on the phone.



Note: if you tap Deny, the app will disable and prompt "Please enable the permission in Settings". You can enable permissions in your smartphone's settings screen.

- 3 On the next screen “Select Area Of Use”, please carefully select your region (for Australia select “Other Region”) and tap “Confirm”.

Select Area Of Use

Mainland China(China Server)
For users in mainland China only, users in Hong Kong, Macau, and Taiwan in China should use Other Areas

European Region(European server)
Recommended GDPR to include users in countries and regions.

Other Region(American server) ✓
Users in other areas please select this area.

Confirm

Make sure that the product you use is the same as the local area you choose. Otherwise the product may not work properly

Confirm

Select Area Of Use

Mainland China(China Server)
For users in mainland China only, users in Hong Kong, Macau, and Taiwan in China should use Other Areas

European Region(European server)
Recommended GDPR to include users in countries and regions.

Other Region(American server) ✓
Users in other areas please select this area.

Confirm

4. To active the APP, either scan “the activate QR code” directly or choose Manual input and input the activation code

Activate Manual input

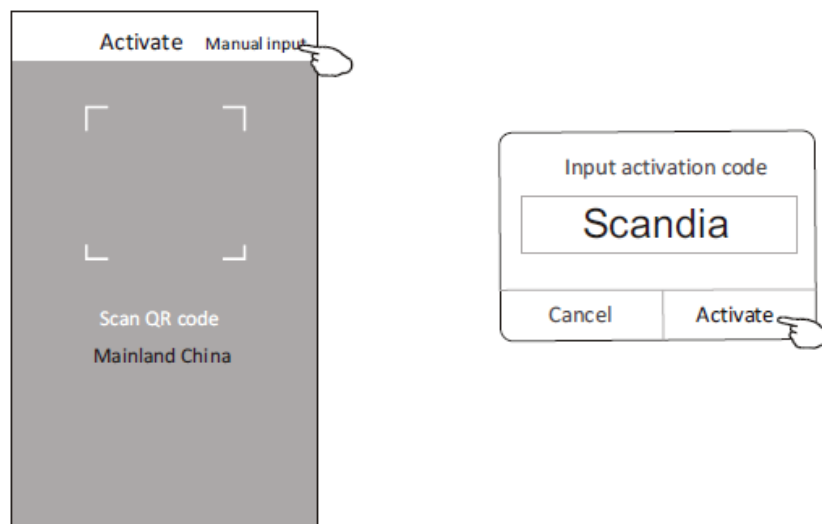
┌ ┐

└ ┘

Scan QR code
Mainland China

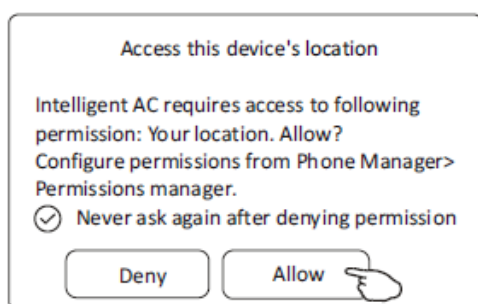


or choose Manual Input and input the activation code “Scandia”

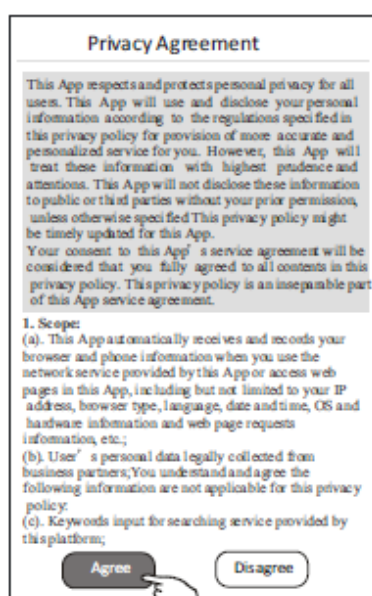


Note Without the QR code or activation code, you can't active and use the APP, please keep them safe.

5. On the next screen “Access this device’s location” please tap “Allow”



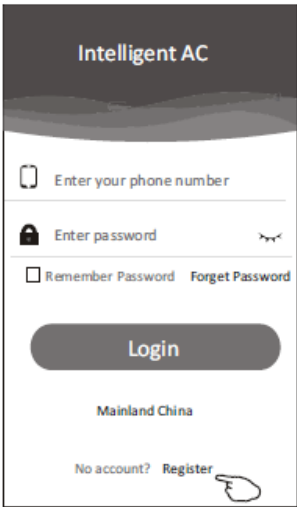
6. The “Welcome” and “Privacy Agreement” screens will now be displayed. Please read the Privacy Agreement carefully and tap “Agree”.



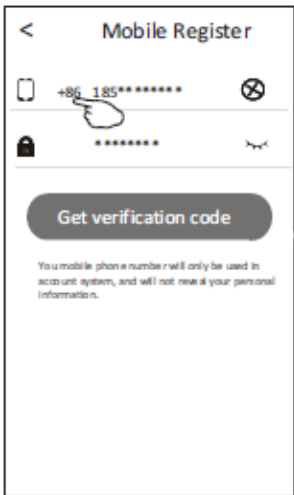
Login-Registration for new user

For a new installation of the APP, the login screen will appear after the “Privacy agreement.” screen

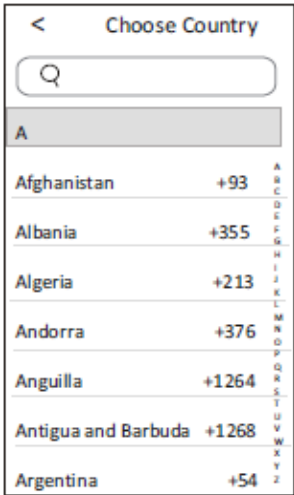
1. If you don't have an account, tap “Register” to set up an account.



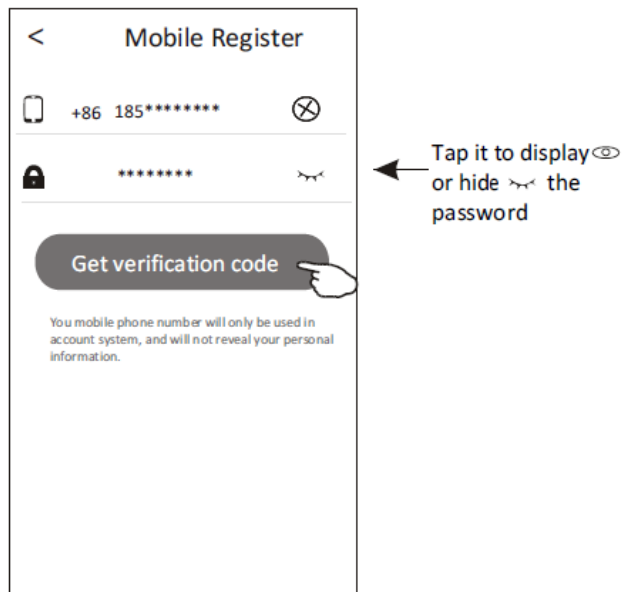
2. Tap the country calling code of your mobile phone number, e.g. +61.



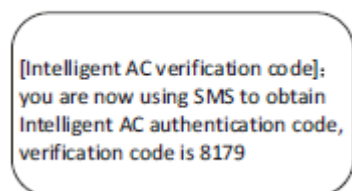
3. Scroll through the screen to find the country where your mobile phone number is located. Tap the country e.g. Australia +61



4. Input your mobile phone number and create a password (Password must be 6~20 characters long and include letters and numbers)
5. Tap “Get verification code” and a message with the verification code will be sent to your smartphone.



Message sample

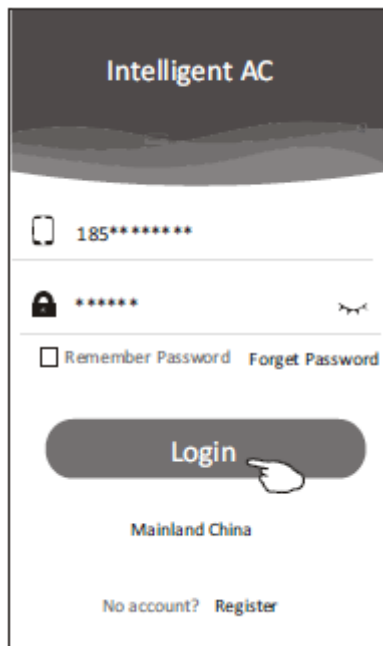


6. Input the verification code within 59s.
7. Tap “Complete” when done.



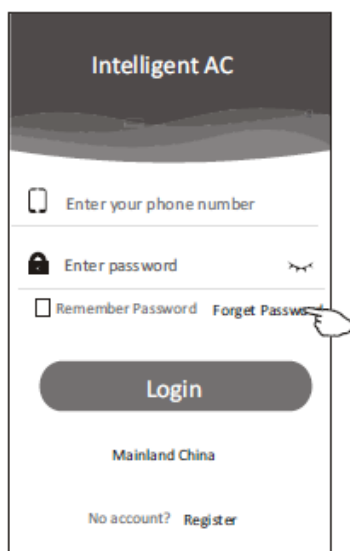
Login

1. Input your mobile phone number and password.
2. Tap "Login".

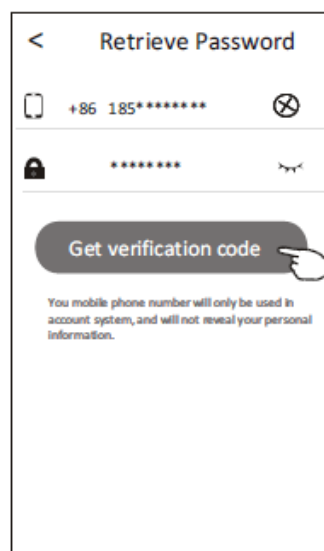


Login - Forgotten Password

1. If you have forgotten your password, to login please tap "Forget Password".
2. Input your mobile phone number and create a new password (Password must be 6~20 characters long and include letters and numbers)
3. Tap "Get verification code" and a message with the verification code will be sent to your smart phone.
4. Input the verification code within 59s.
5. Tap "Complete" when done.



Step 1



Steps 2 & 3

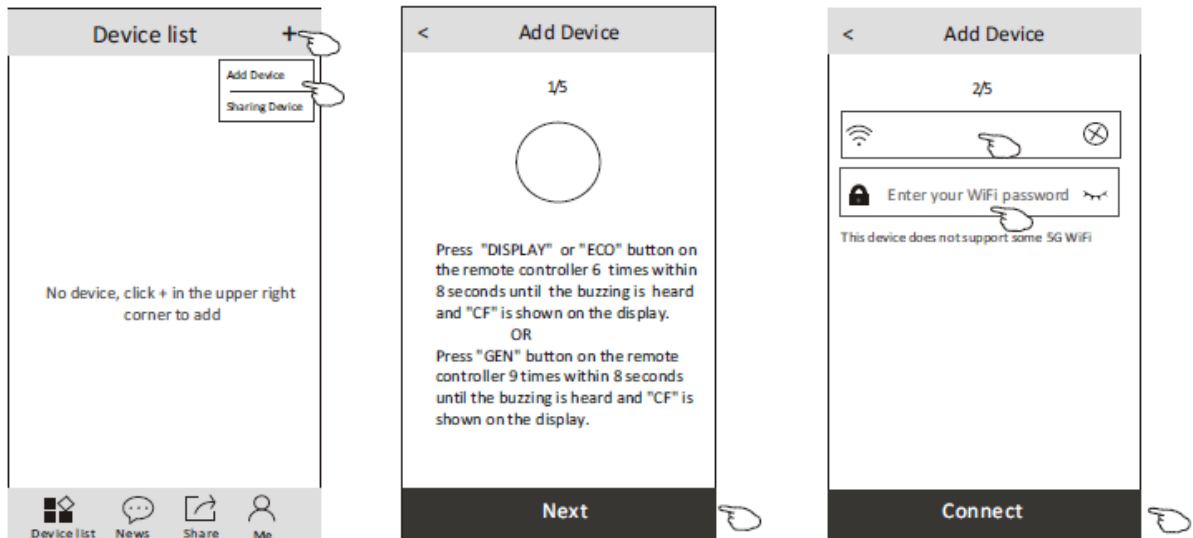


Steps 4 & 5

Adding your Air Conditioner to the App

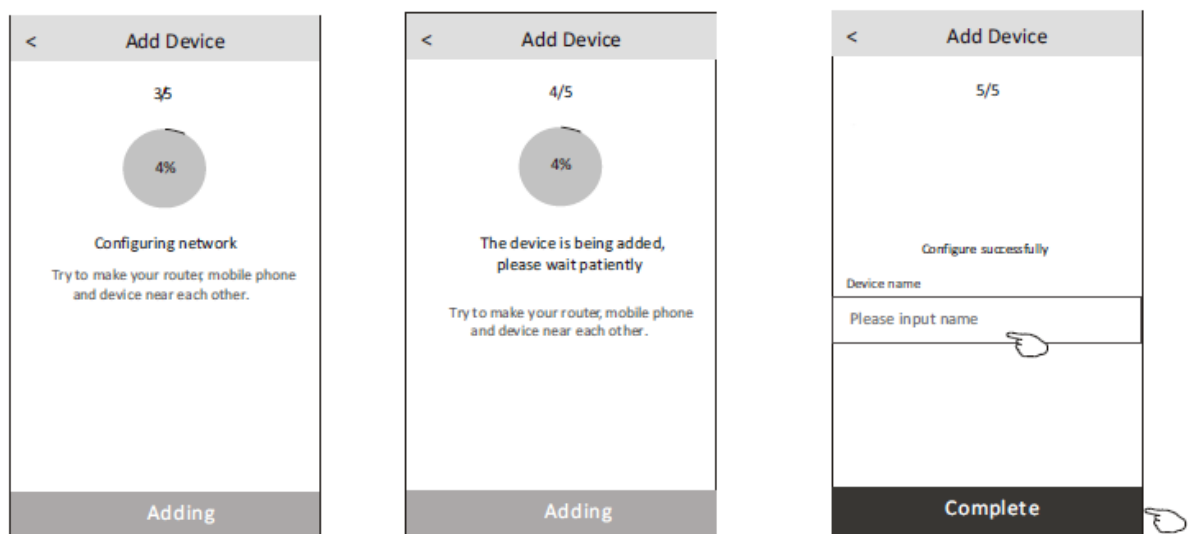
Ensure the smartphone is connected to the home Wi-Fi and not mobile data

1. Click "+" in the upper right-hand corner of the "Device list" screen, then tap "Add Device".
2. Follow the instructions on the "Add Device 1/5" screen or press the restart button on the Wi-Fi module to restart the Wi-Fi module. When completed, tap "Next".
3. Input the home network Wi-Fi name and password on the "Add Device 2/5" screen. When completed tap "Connect".



4. The configuration process may take a few minutes. You can follow the connecting process on the indoor display as shown below
 "PP" means "searching for the router"
 "SA" means "connected to the router"
 "AP" means "connected to the server"
5. The configuration process will automatically move to screens 4/5 and 5/5.
6. On screen "Add Device 5/5" the name of the air conditioner can be entered (e.g. Lounge Aircon). Once complete, tap "Complete". The Air Conditioner will now be listed on the Device list screen.

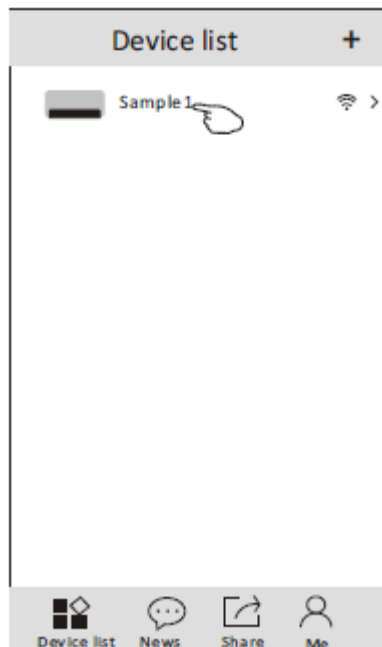
Repeat this process to add further air conditioners



Using the App to control the Air Conditioner

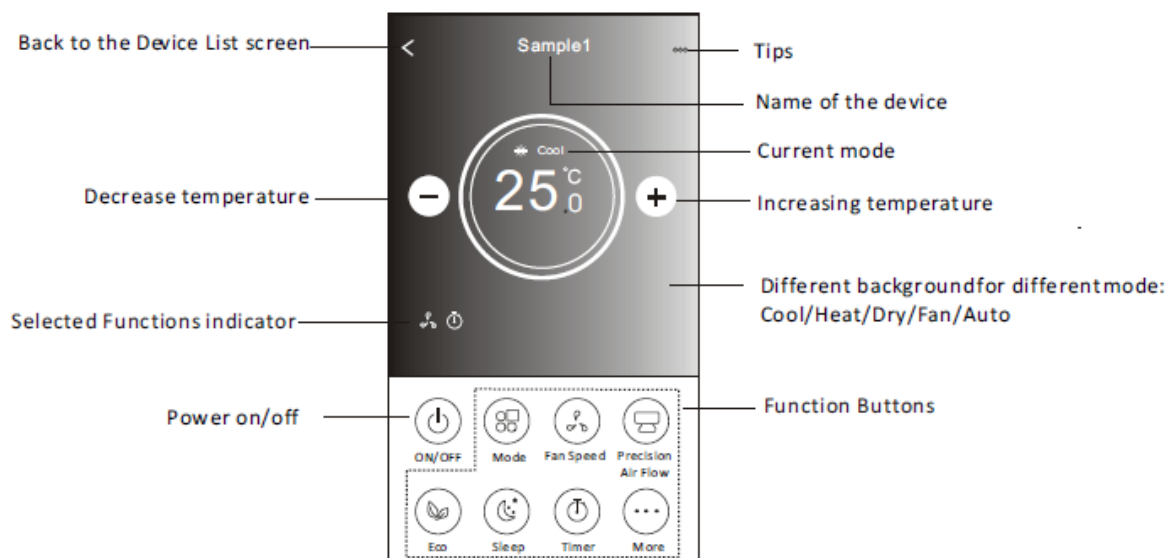
Accessing the Air Conditioner

Tap the name of the Air Conditioner you wish to control to access the main control screen for that device.

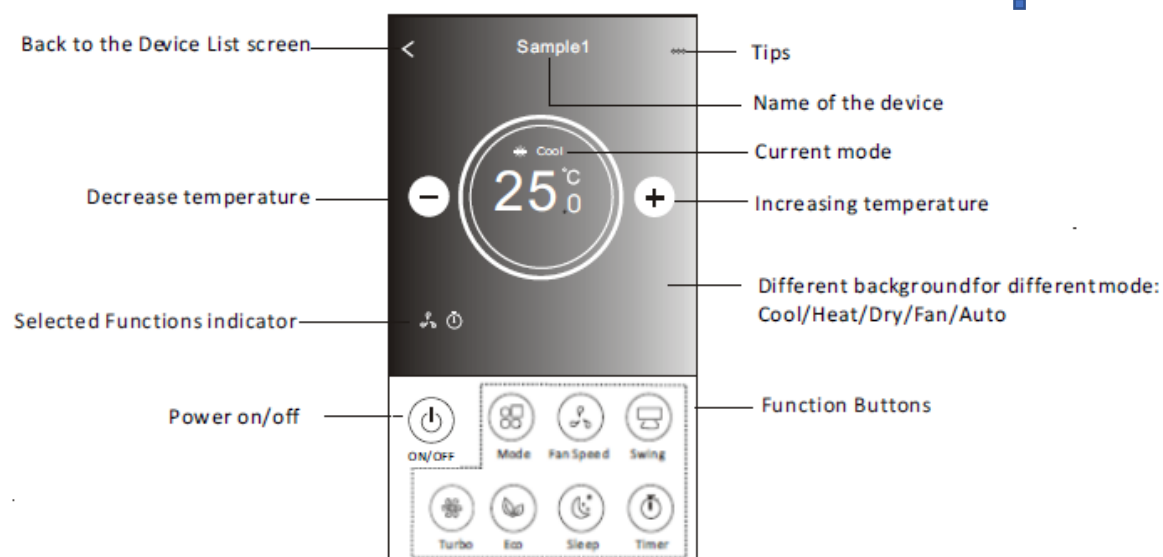


Main Control Screen

Screen for ADINA 2.5 and ADINA 3.3



Screen for ADINA 5.1 and ADINA 7.3

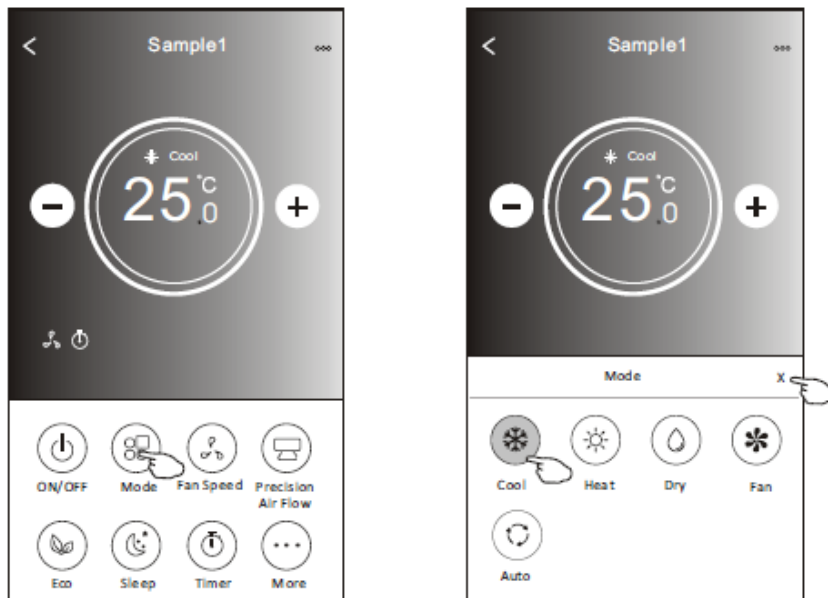


On/ Off Operation

Tap “Power on/off” to turn the Air Conditioner on.

Operating Mode

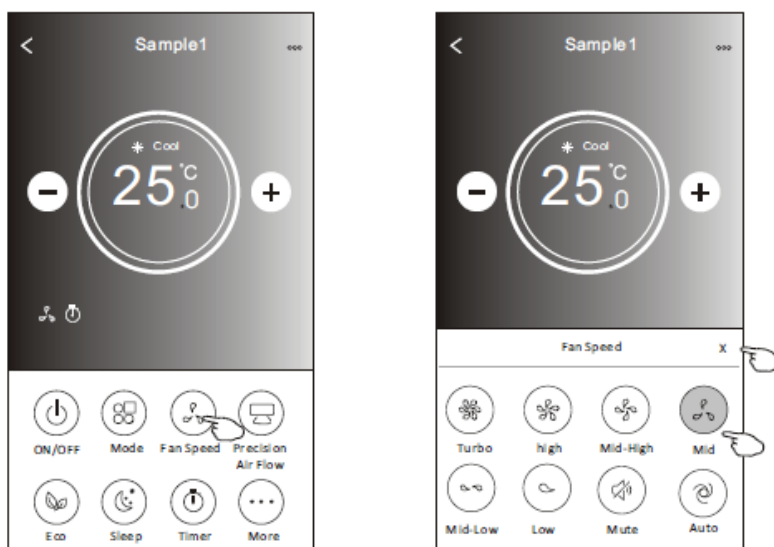
1. Tap the “Mode” button to access the “Mode” menu.
2. There are five modes on the “Mode” menu (Cool, Heat, Dry, Fan, Auto). Tap the required button for the operating mode required. Please read the Owner’s manual for more information on each mode
3. Tap “X” to return to the main control screen.
4. The mode and background will change on the screen.



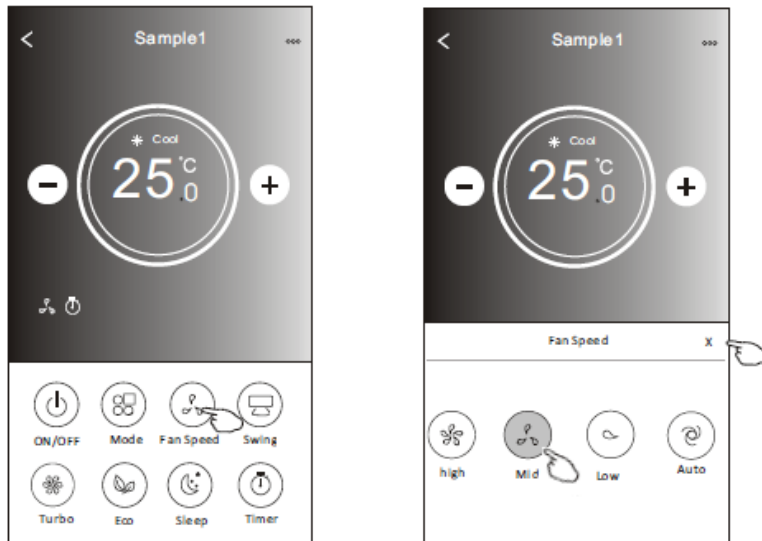
Fan Speed

1. Tap the “Fan Speed” button.
2. Choose your desired fan speed and tap it.
3. Tap the “X” button to go back to the main control screen.
4. The selected fan speed indicator will appear on the screen.

ADINA 2.5 and ADINA 3.3



ADINA 5.1 and ADINA 7.3

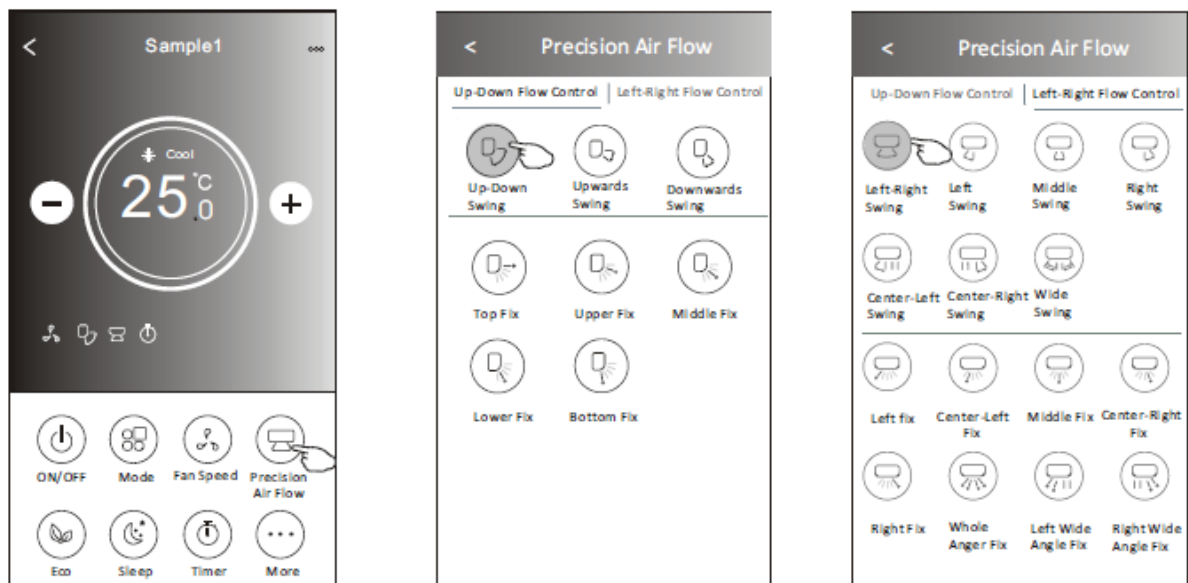


Mode	Fan Speed
Cool	All Speeds
Fan	All Speeds
Dry	Fan Speed not Adjustable
Heat	All Speeds
Auto	All Speeds

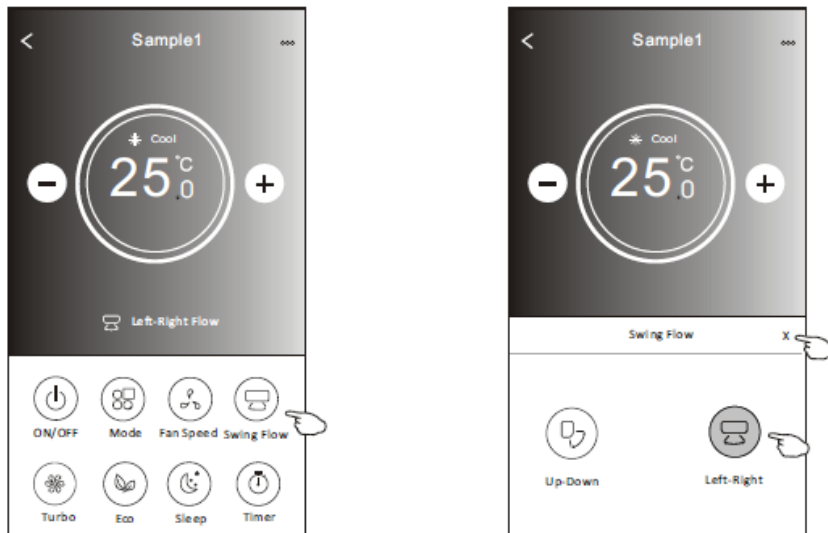
Air conditioner control - air flow control

1. Tap the "Swing" button or "Precision Air Flow" button.
2. Choose your desired air flow and tap it.
3. Tap the "X" button to back to the main control screen.
4. The selected air flow indicator will appear on the screen.

ADINA 2.5 and ADINA 3.3



ADINA 5.1 and ADINA 7.3

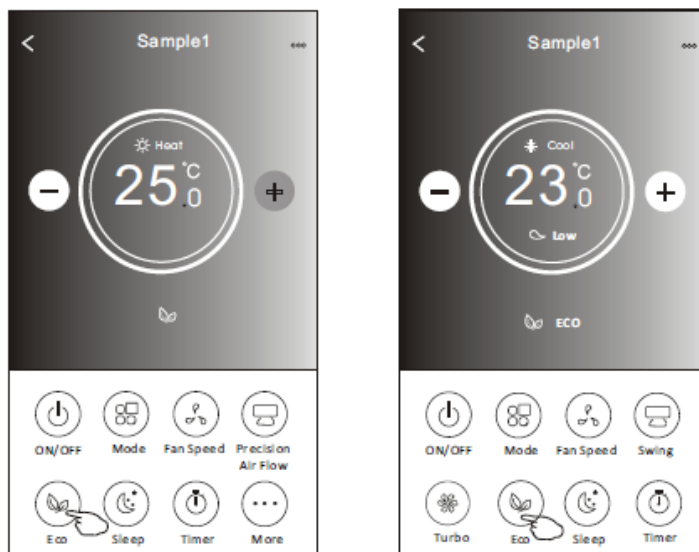


Air conditioner control - ECO

1. For ECO function, just tap the button to activate the function, the button will be lit and the indicator will appear on the screen.
2. Tap again to disable the function.

Note: ECO is only available in Heat/Cool mode

For more information on the ECO mode operation refer to the Owner's Manual

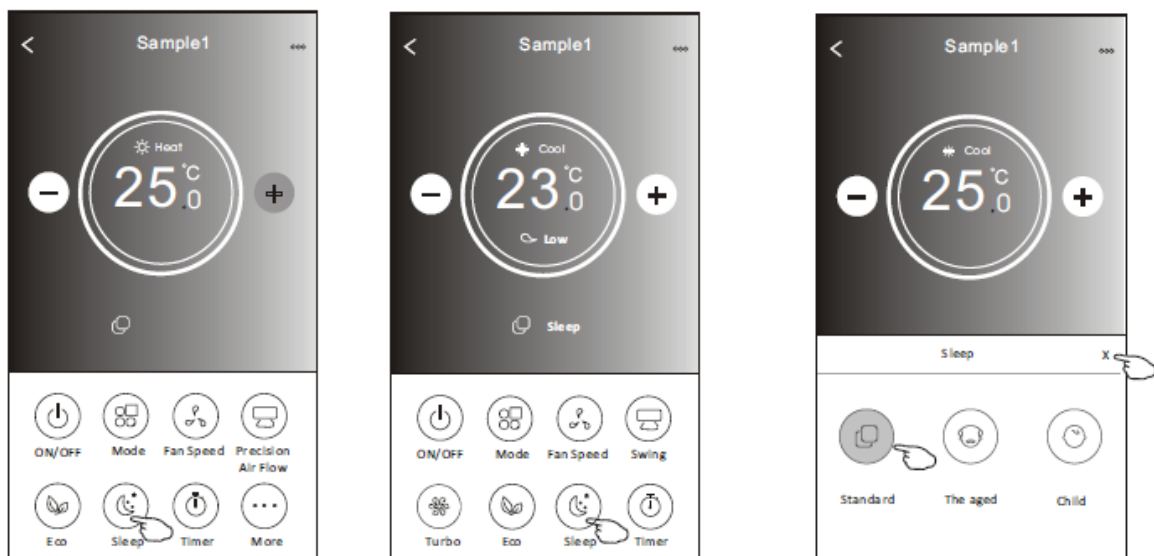


ADINA 2.5 & ADINA 3.3

ADINA 5.1 & ADINA 7.3

Air Conditioner control - Sleep

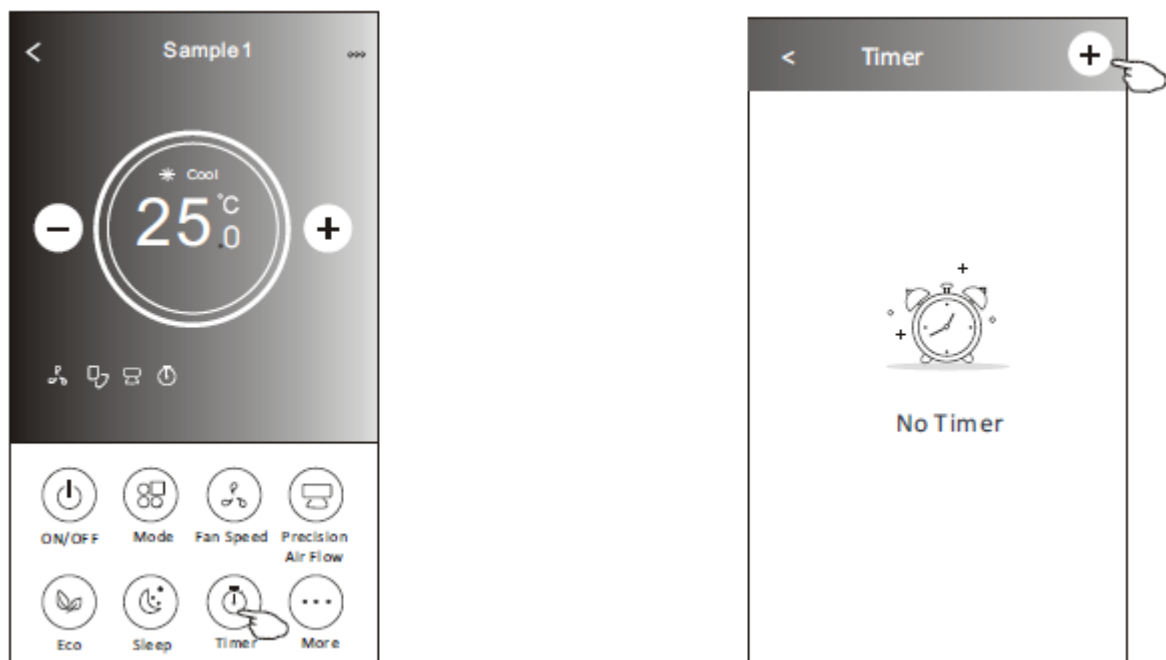
1. Tap the "Sleep" button.
2. Choose your desired sleep mode and tap it.
3. Tap the "X" button to back to the main control screen.
4. The selected sleep mode indicator will appear on the screen.



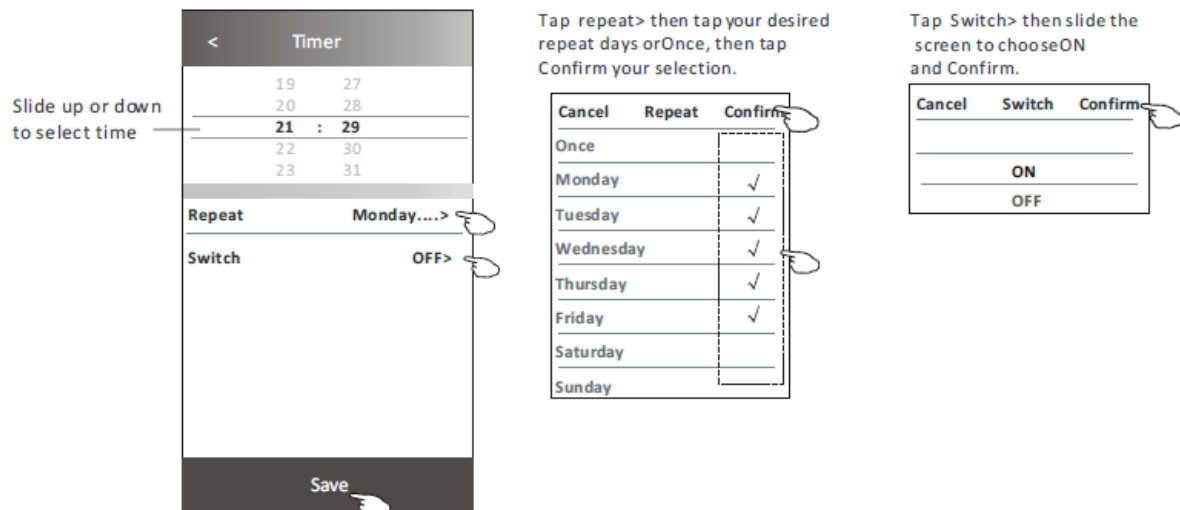
Note: the Sleep settings (Standard, The Aged, Child) apply different temperature profiles through the night

Air Conditioner control – Timer (Off)

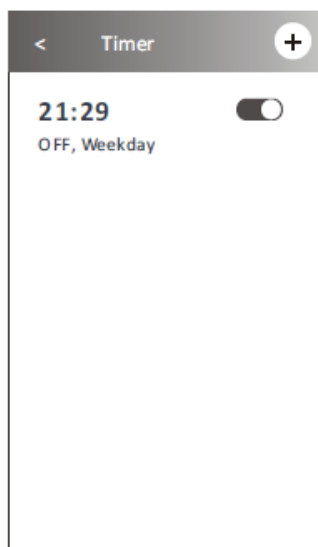
1. Tap the "Timer" button.
2. Tap "+" in the upper right corner of the Timer main screen.



3. Choose the Time/ Repeat/ Switch OFF then tap Save.

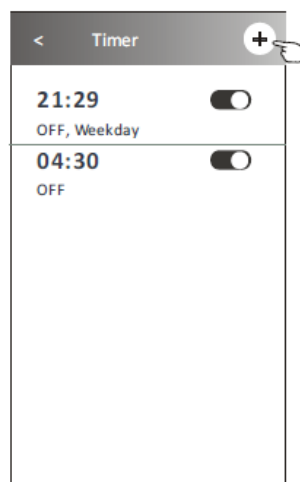
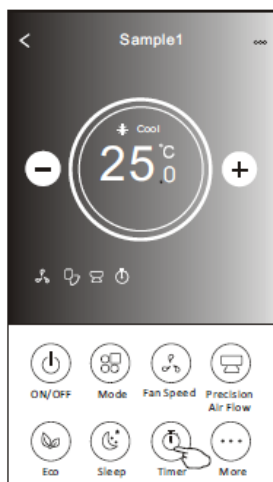


4. The timer (off) will appear on the Timer main screen.

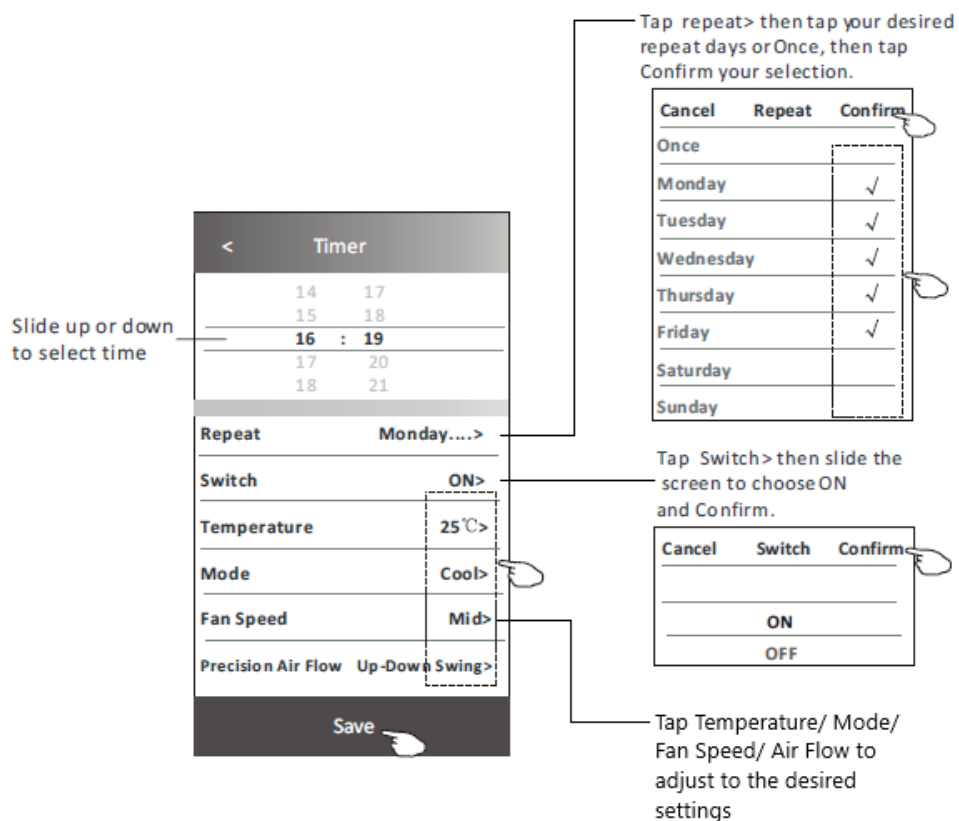


Air Conditioner control – Timer (On)

1. Tap the “Timer” button.
2. Tap “+” in the upper right corner of the Timer main screen.



3.Set the Time/Repeat Date/ Switch (ON)/ Temperature/Mode/ Fan speed/ Air Flow to your required settings then tap “Save”.



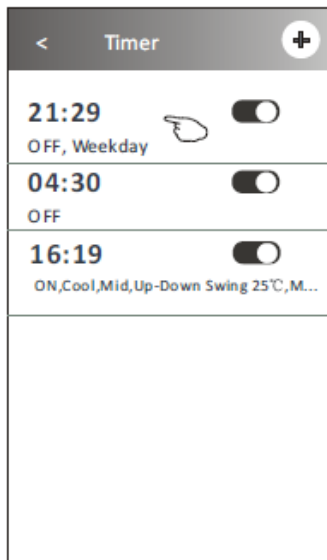
4.The timer (on) will appear on the Timer main screen.

< Timer +	
21:29	<input checked="" type="checkbox"/>
OFF, Weekday	
04:30	<input checked="" type="checkbox"/>
OFF	
16:19	<input checked="" type="checkbox"/>
ON, Cool, Mid, Up-Down Swing 2.5°C, M...	

Air Conditioner control – Timer (change /disable /delete)

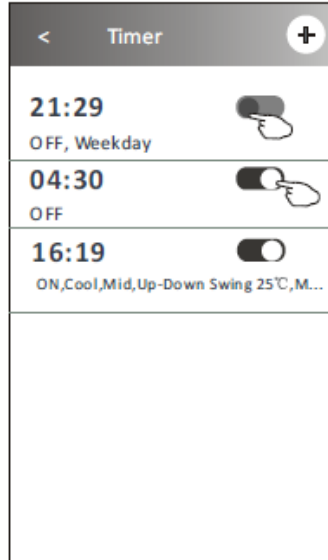
Change the Timer setting:

Tap anywhere in the timer list bar (except the slide switch) to access the Timer setting screen, change the settings as required and then tap “Save”.



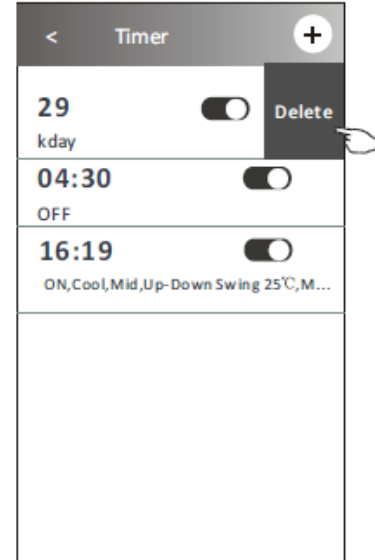
Enable or Disable the Timer:

Tap the left side of the slide switch to disable the Timer. Tap the right side of the slide switch to enable the Timer.



Delete the Timer:

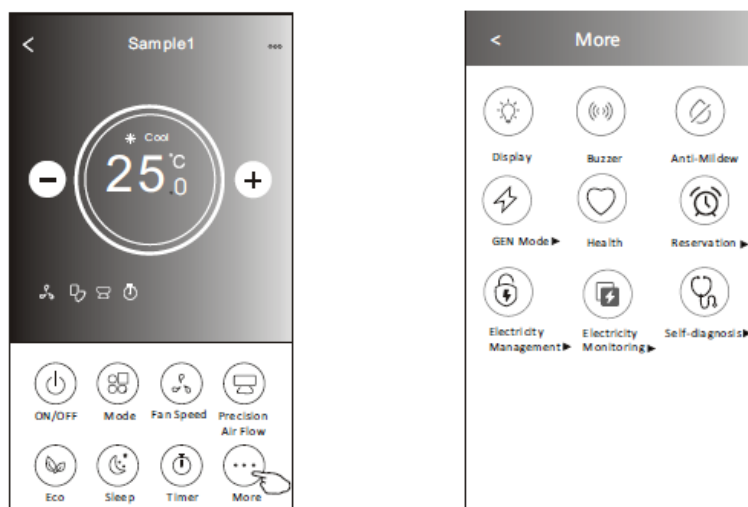
Slide the list bar of the Timer from right to left until the Delete button appears, then tap delete.



Air Conditioner Control – Additional Functions

NOTE – these additional functions only available on ADINA 2.5 and ADINA 3.3

1. Tap the “More” button to operate additional functions if it appears on the screen.



2. Tap the "Display" to switch on/off the indoor LED display.



3. Tap the "Buzzer" to switch the buzzer on the indoor unit on/off when operating using the APP.

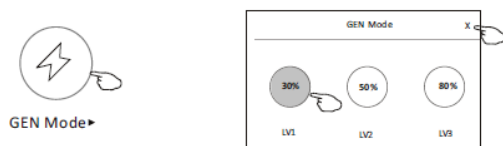


4. Tap the “Anti-Mildew” button to activate the Anti-Mildew function, if it is available on the screen. After AC turning off, it will start drying, reduce residual moisture and prevent mould, after function finish, it will automatically turn off.



5. Tap the “GEN Mode” button, if it is available on the screen.

In this Mode, you can choose one of the three levels of current. The air conditioner will maintain the current level to save energy.

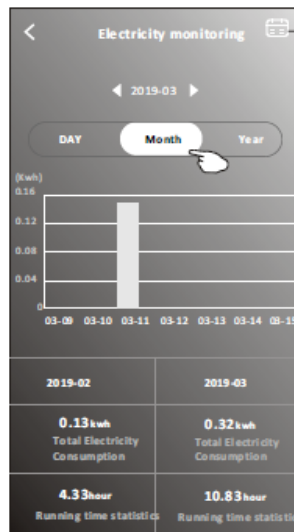
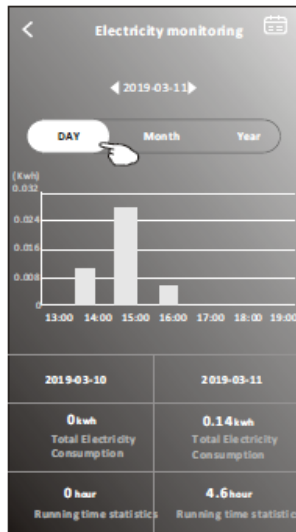


6. Tap the “Electricity Monitoring” button if it is available on the screen.

In this function, you can monitor the air conditioner’s electrical consumption



Electricity
Monitoring



Tap this button to bring up the calendar from which the required date can be selected

7. Tap the “Self-Cleaning” button, if it is available on the screen.
More information on the operation of the Self-Cleaning function can be found in the User Manual.



Self-Cleaning

8. Tap the “8 Heat” button, if it is available on the screen.
This function help keep the room temperature over 8. More information on the operation of the 8 Heat function can be found in the User Manual

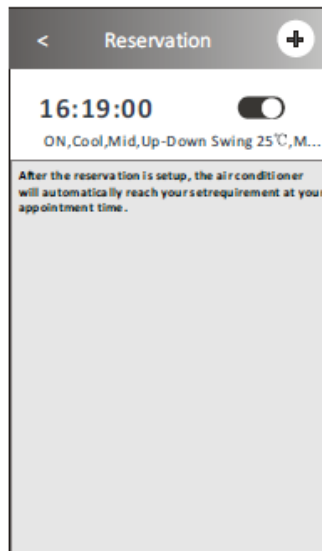
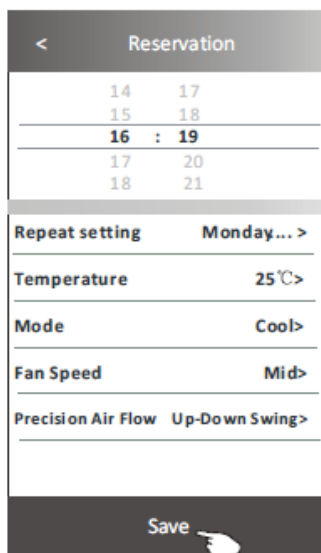


8°C Heat

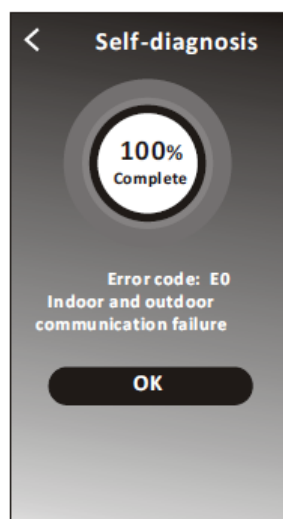
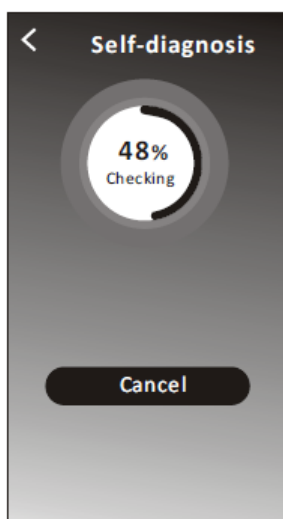
9. Tap the “Reservation” button, if it is available on the screen.
You can set the time, repeat day, temperature, mode, fan speed, air flow as you desired and then tap Save to activate the function.
The air conditioner will automatically reach your settings at the appointment time.



Reservation

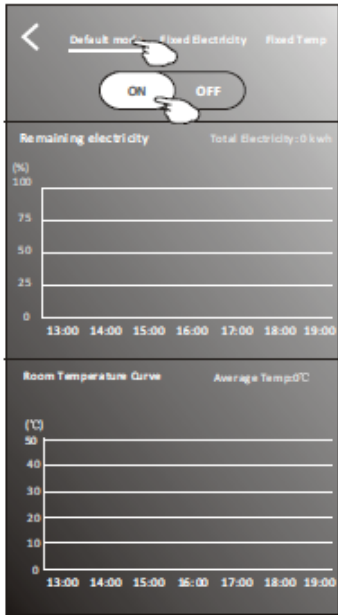


11. Tap the "Self-diagnosis" button, if it is available on the screen.
The air conditioner will automatically diagnose itself and indicate the Error code and the problem description if possible.

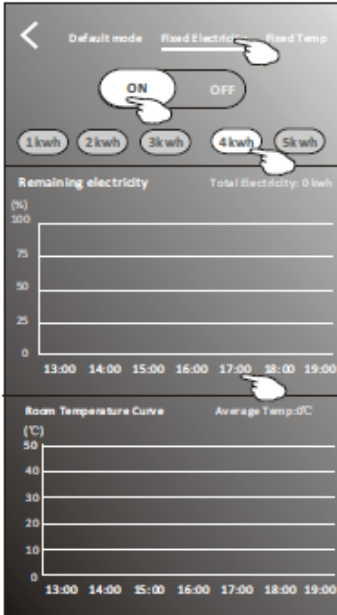


12. Tap the “Electricity Management” button if it is available on the screen.

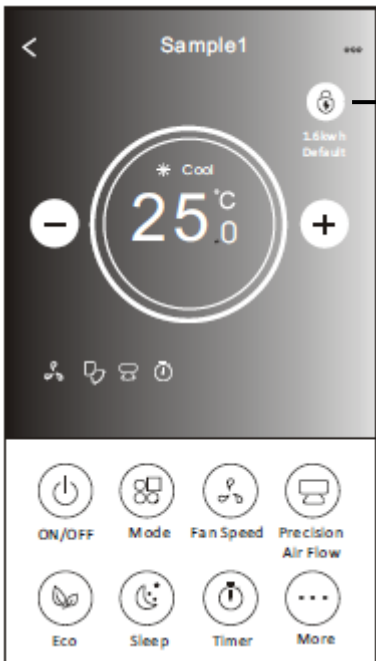
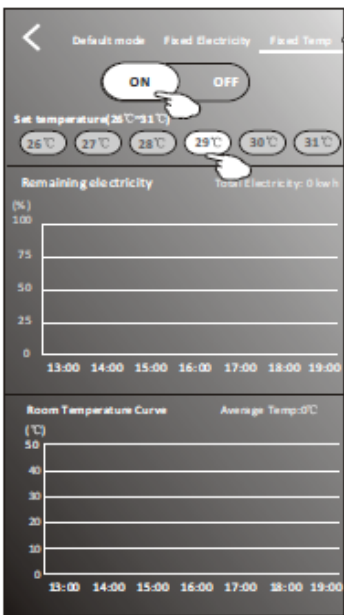
Default Mode
AC auto operate, ultimate smart energy saving, cool and comfortable sleeping at night
Choose Default Mode
Switch On



Fixed Electricity
AC auto operates as per the fixed electricity power, the user can select the fixed electricity power every night
Choose Fixed Electricity Mode
Select the fixed power consumption desired
Switch On
The time can be slide left to right to show more



Fixed Temperature
AC operates per the fixed temperature; the user can select different temperature every night
Choose Fixed Temp mode
Select the fixed temperature
Switch on

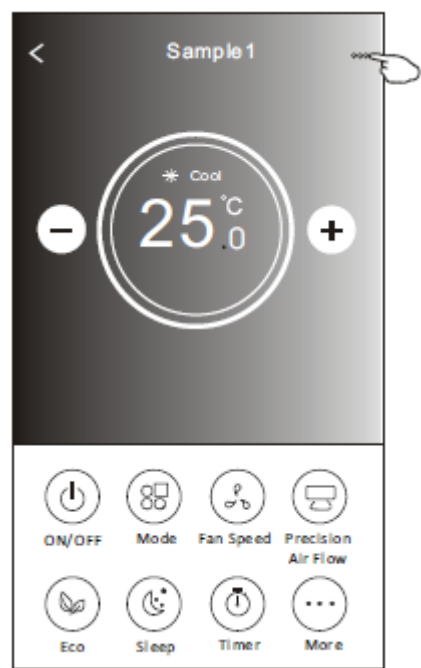


Electrical Management Indicator

APP Settings

Tips of the device

Tap “...” in the upper right corner of the device’s main screen

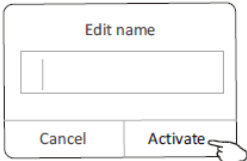


Tap right or left of the bar to turn on/off the tips below

Tap to edit name/ rename
Enter the new name and tap Activate

Tap to get the device information

Tap to delete the device

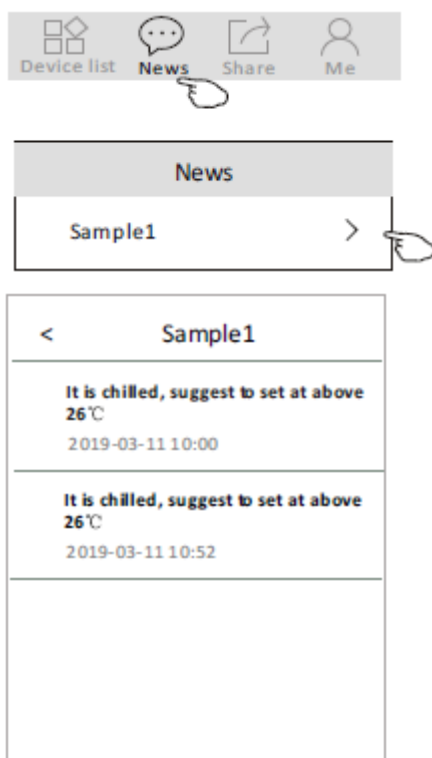


< Device information	
PID	00000xxxxxx
DID	00000xxxxxx
MAC	34.ea.xxxxxxx
Device IP	192.168.xxxxxxx
Access cloud	106.xxxxxxx
Data cloud	47.xxxxxxx
Copy all	

News

This can be accessed in the Device list page

1. Tap “News” in the bottom of the device list screen.
2. Tap the device name and you can check the news of the device when operating.



Sharing the device

1. Online, Offline

The symbols below appear in the device screen next to the device name





Online, you can control the air conditioner through Wi-Fi without Internet in the same Wi-Fi home network, or you can control the air conditioner through Internet base on mobile network (3G/4G) or other Wi-Fi resources.



The air conditioner is off or has a connecting issue.

2. Tap “Share” in the bottom of the device list screen.
3. Tap “Sharing device”.
4. Tap “Share” and send the QR code to other people.
5. Other people have to get into the Device Sharing screen of this APP to use the integrate scanner to scan the QR code.

Account and Help

1. Tap  in the bottom of the device list screen.
2. Tap  to take or choose a picture for your account.
3. Tap “Account name” to edit the name.
4. Tap “Setting” to change your login password or access the Privacy Agreement.
5. Tap “About” to check the APP version and Backstage Server.
6. Tap “Help” to get some operating instructions and solutions to problems.



Note

1. Due to technical updates, there may be differences between the actual APP and what is in the manual.
2. The "Intelligent AC" APP can be altered without notice for quality improvement and also be deleted depending on the circumstances of manufacturing firms.
3. If the Wi-Fi signal strength is weak, the Smart App may be disconnected. So, make sure the indoor unit is near to a wireless router.
4. Dynamic Host Configuration Protocol (DHCP) server function should be activated for wireless router.
5. The internet connection may fail because of a firewall problem. In this case, contact your internet service provider.
6. For smartphone system security and network setting, make sure the "Intelligent AC" APP is trusted.

Troubleshooting Guide

Description	Analysis of cause
Air conditioner can't be configured successfully	<ol style="list-style-type: none"> 1. Check the mobile's connected Wi-Fi address and password is correct; 2. Check the air conditioner under configuration status; 3. Are there are any firewall or other restrictions that have been set; 4. Check the router is working normally; 5. Make sure the air conditioner, router and mobile are within the WiFi signal scope; 6. Check router not shielding App;
Smartphone can't control air conditioner	<p>Software displays: "Identification failed", It means the air conditioner has been reset, and the mobile phone lost control permission. You will need to reconnect to the Wi-Fi to get permission again.</p> <p>Please connect the local network and refresh it. If the smartphone still can't control the air conditioner, please delete the air conditioner and wait for it to refresh.</p>
Smartphone can't find air conditioner	<p>Software display: Air conditioner out of line. Please check the following;</p> <ol style="list-style-type: none"> 1. The air conditioner hasn't been reconfigured; 2. The air conditioner has power; 3. The Router has power; 4. Air conditioner can connect to router; 5. Air conditioner can connect to network through the router (under remote control mode); 6. Mobile can connect to router (Under local control mode); 7. The mobile phone can connect to network (under remote control mode).

Terms and Conditions

Definitions

App means the Intelligent AC App that you can download to operate your Adina air conditioner

License to Use

The user is granted a non-exclusive, non-transferable, non-sharable, revocable, limited license to use the app/service solely for personal, non-commercial use in accordance with the terms of this Terms & Conditions

You are responsible for all costs incurred in accessing, downloading and using the App. Including, but not limited to, fees charged by your internet service provider, smartphone or app data access charges and any other access charges or device usage charges.

You must follow the instructions in the Adina WiFi Manual to use the App.

The App may be used as an alternative method of controlling your Adina air conditioner, but should not be used for critical heating or cooling applications.

Prohibited Conduct

You must not use the App for any prohibited or unlawful purpose.

Right to Terminate Accounts

Scandia may terminate these Terms & Conditions immediately through the App or by any other appropriate means if you are in breach of the Terms & Conditions.

You may terminate these Terms & Conditions by deleting and ceasing use of the App.

Ownership of Your Content

All intellectual property rights in the App are licensed to Scandia by third parties. You do not acquire any express or implied rights in any these intellectual property rights, other than those granted in downloading the App and within the context of these Terms & Conditions.

You may not modify, copy, sell, reproduce, interfere with or distribute the App in any way.

Right to Update or Modify Terms

Updates may be made to the App and/or these Terms and Conditions from time to time. You should periodically check for these changes, download and understand the updates to ensure you continue to have access to the functions of your Adina air conditioner and App.

After modification, a user will be agreeing to new Terms if he continues using the app

Disclaimer of Warranty

Scandia makes no warranties that the App will be error-free, secure or free from any virus, malicious code or other adverse elements.

Disclaimer of Liability

Scandia excludes any liability which may arise as a result of you downloading, accessing or using the App.

Scandia will not be liable for any indirect or consequential loss arising from the downloading, installation and/or use of the App

Scandia does not exclude or restrict liability to the extent provided for by the Australian Consumer Law